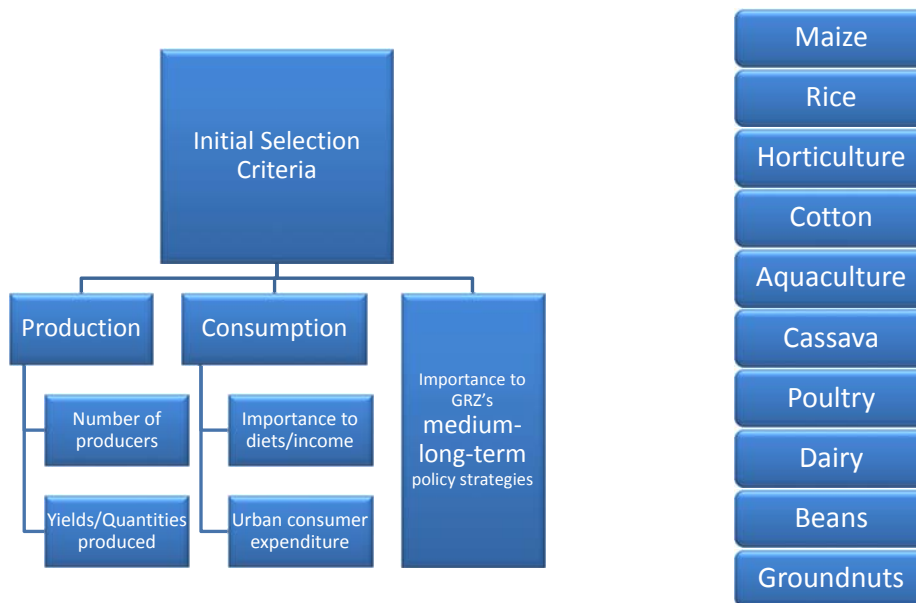
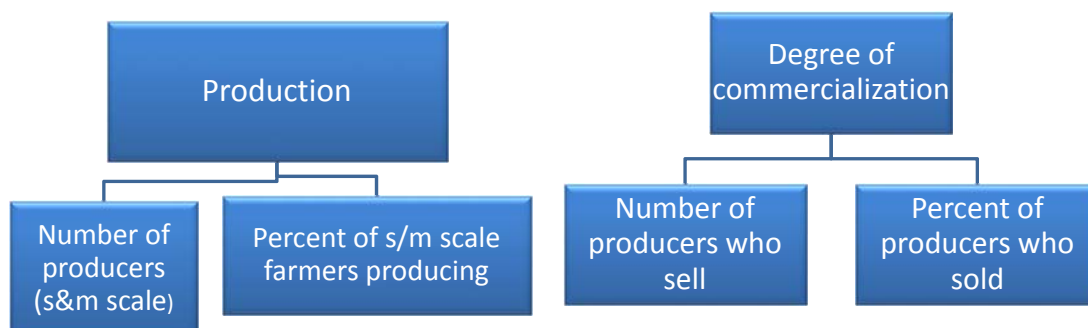


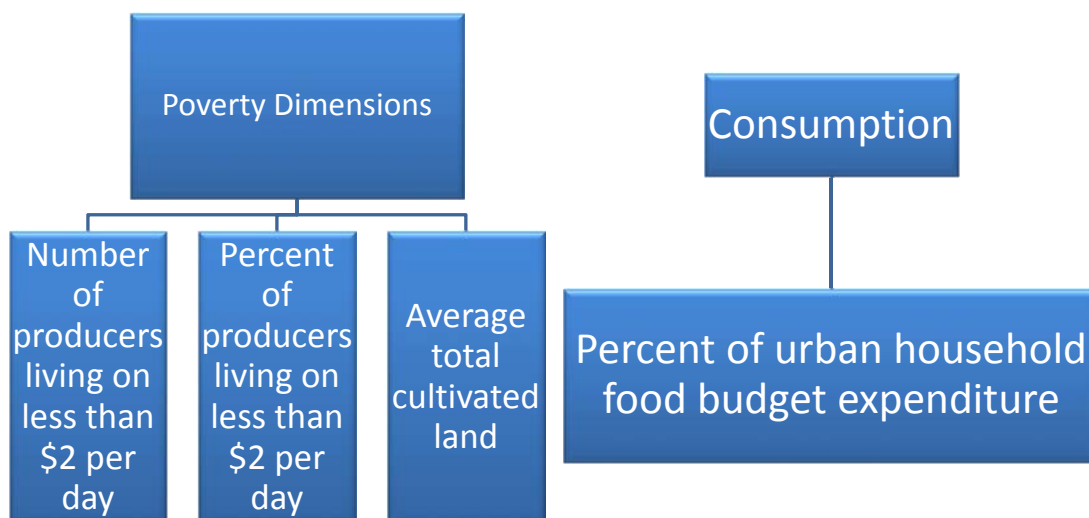
# Initial Value Chain Selections



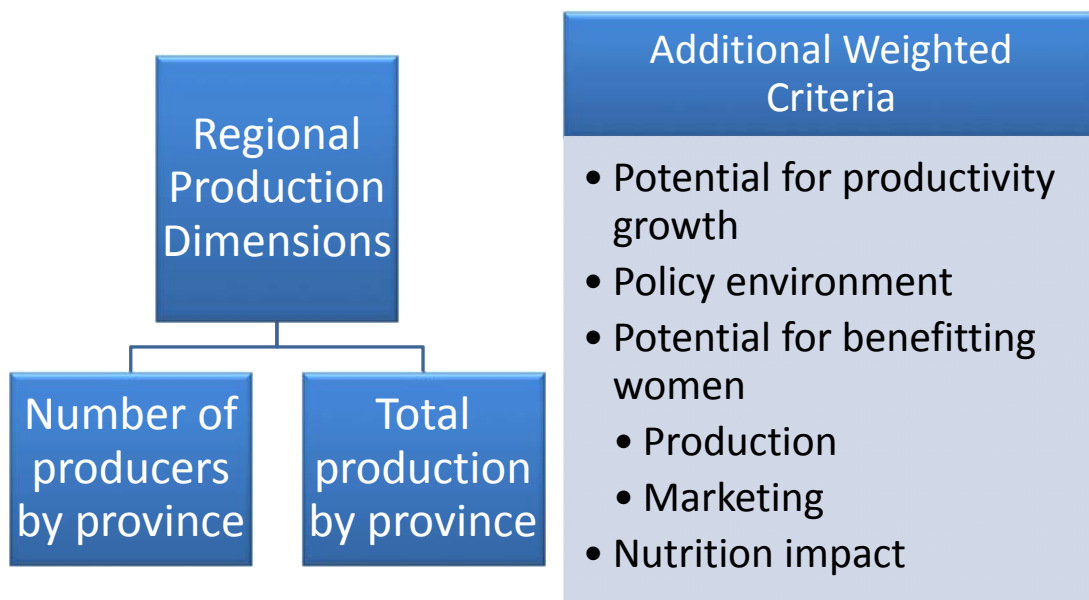
# Data Used for Analyzing Value Chains



## Data Used for Analyzing Value Chains



## Data Used for Analyzing Value Chains



## First Tier Evaluation of Value Chains

### Magnitude of Impact: Size of bubble

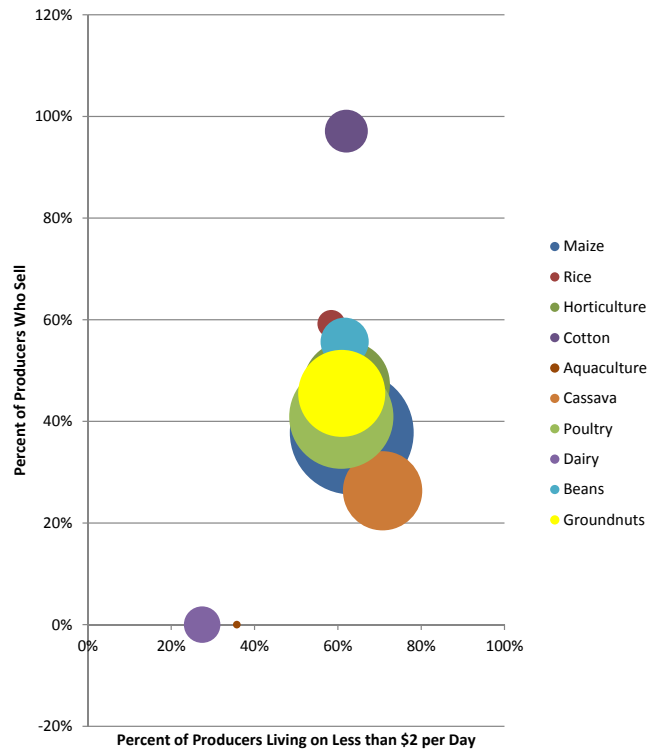
- Percent of s/m scale farmers who produce

### Poverty Impact: X-axis

- Percent of producers living on less than \$2 per day

### Potential for commercialization: Y-axis

- Percent of producers who sell



## First Tier Elimination of Value Chains

### Rice

- Minimal impact potential
- 4% of producers in Zambia grow rice

### Cotton

- Minimal impact potential
- 10% of producers in Zambia grow cotton

### Aquaculture

- Minimal impact potential
- Only 0.3% of farmers have fish ponds
- Minimal poverty reduction potential
- 36% of farmers with fish ponds live on less than \$2 per day

### Dairy

- Minimal impact potential
- 7% of farmers have dairy cows
- Minimal poverty reduction potential
- 27% of dairy producers live on less than \$2 per day

